



PDI 400 Series Suspension Arm Installation Instructions



This symbol is intended to alert the user that parts inside the product are a risk of electrical shock to persons.



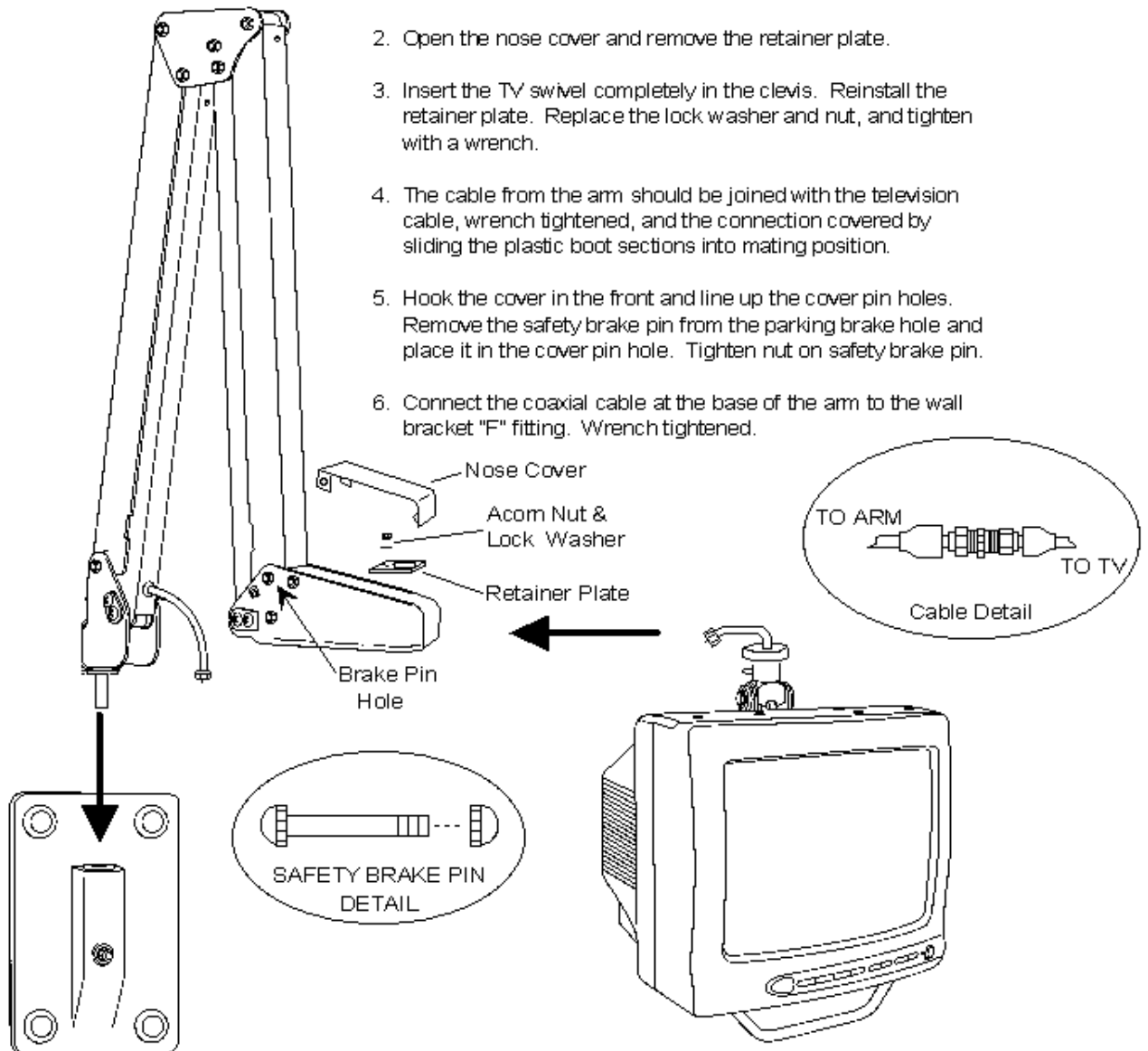
This symbol is intended to tell the user that important operating and servicing instructions are included with this product.

THIS INSTALLATION SHOULD BE MADE BY A QUALIFIED SERVICE PERSON AND SHOULD CONFORM TO ALL LOCAL CODES. READ AND FOLLOW THE SAFETY INSTRUCTIONS BEFORE ATTEMPTING THIS INSTALLATION.



The Safety Brake Pin must remain in the safety brake hole whenever the television set is removed from the arm or when the arm is removed from the wall bracket to prevent the arm from springing open.

1. Place the arm's base pin into the wall bracket.
2. Open the nose cover and remove the retainer plate.
3. Insert the TV swivel completely in the clevis. Reinstall the retainer plate. Replace the lock washer and nut, and tighten with a wrench.
4. The cable from the arm should be joined with the television cable, wrench tightened, and the connection covered by sliding the plastic boot sections into mating position.
5. Hook the cover in the front and line up the cover pin holes. Remove the safety brake pin from the parking brake hole and place it in the cover pin hole. Tighten nut on safety brake pin.
6. Connect the coaxial cable at the base of the arm to the wall bracket "F" fitting. Wrench tightened.



IMPORTANT SAFETY INSTRUCTIONS

Note to CATV system installer: This reminder is provided to call the CATV system installer's attention to Article 820-40 of the NEC that provides guidelines for proper grounding and, in particular, specifies that the cable ground shall be connected to the grounding system of the building, as close to the point of cable entry as practical. NOTE: THIS ARM CONTAINS INTERNAL SPRINGS UNDER TENSION. AN ARM RECOIL ACCIDENT HAZARD IS POSSIBLE. FOLLOW ALL SAFETY INSTRUCTIONS AT ALL TIMES.



Keep the safety brake pin in place UNTIL the arm is on the wall mount and TV is in place. Then, remove and use to secure cover plate.



To prevent fire or shock hazard, DO NOT EXPOSE this arm to rain or moisture.



Always put SAFETY BRAKE PIN in place before removing TV arm, or, arm from wall.

Unplug this unit from the wall outlet before cleaning. Do not use liquid cleaners or aerosol cleaners. Use a damp cloth for cleaning. This unit REQUIRES periodic maintenance. Refer to maintenance manual for instructions. SAVE this instruction sheet for future reference.

MODEL 400 ARM MAINTENANCE

Very little maintenance should be required for your PDI Arm to give years of trouble free service if the following lubrication and inspection procedures are followed.

1.INSPECTION

- Occasionally check the base pin for any evidence of bending or distortion, due to a patient using THE ARM for assistance in getting in or out of bed or any other misuse. If THE ARM is not mounted with the base pin absolutely vertical, it will have a tendency to drift and will not properly counter balance the television. Be certain that the wall THE ARM is mounted to is vertical (see attached).

2.SPRING ADJUSTMENT

- See adjustment procedure for your ARM model.

3.LUBRICATION

- At least once a year a drop of light machine oil should be put on each pivot point in the nose, elbow and base. **DO NOT PUT OIL ON THE FRICTION DAMPER PADS (PDI-114)!**

4.REPLACEMENT OF COAX CABLE

- With the television removed and nose cover off, loosen the retaining screw which holds the cable clamp inside the nose.

Cut connector from cable at the base of THE ARM and solder new shielding of cable end to end.

Push approximately five and one half feet of new cable through the hole in the base of THE ARM and pull the resulting loop out of the opening at the back of THE ARM behind the base bracket.

With THE ARM fully extended (both front and rear section parallel to the horizon) pull the cable from the nose end until the end of the new cable protrudes two inches beyond the end of the nose. Push cable loop through the hole at the base of THE ARM and allow rear arm section to travel upward to full vertical position. (Front arm remains parallel to the horizon).

Pull cable snug through hole in rear arm section and reposition slightly 400 Series through the nose since the cable wraps around components at the elbow. Push the cable in an additional half inch from the nose to guarantee adequate play at the elbow and retighten the cable clamp.

With front arm section in extended position, use index finger to push cable up slightly through the ends with "F" in the nose applied to leave one and a quarter inch from the leading edge of the nose to the tip of the exposed center conductor. The plastic boot which covers the connection within the nose must be placed on the cable before the "F" connector is applied. Apply connector. Cut wire trailing from base of arm to desired length and apply connector.

5.TORQUE ADJUSTMENT OF PIVOT SCREWS -

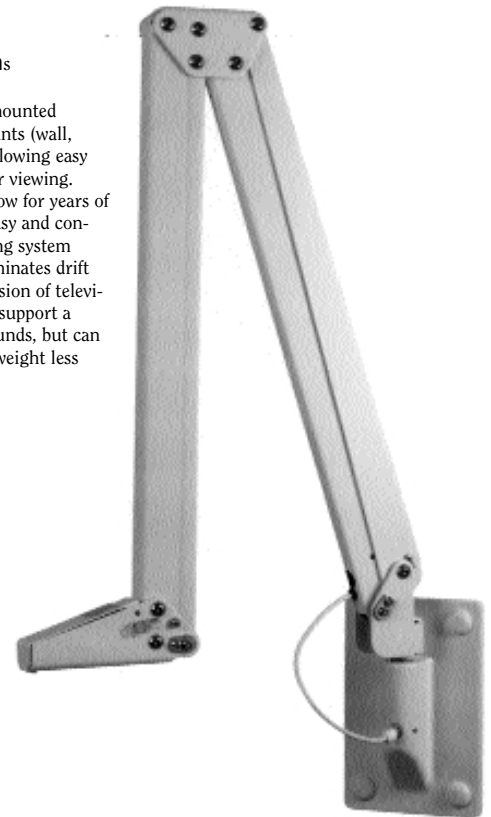
All screws in THE ARM are tightened securely, and loctited, at the factory and do not require specific check with a torque wrench. **IF THE THREADS ARE STRIPPED IN THE NOSE, ELBOW OR BASE, THIS PART NEEDS REPLACEMENT - DISCONTINUE USE IMMEDIATELY.**

Although THE ARM parts list is shown on the next few pages, it is not recommended that THE ARM be repaired in the field. The spring tension is such that grave harm can be done to those not experienced with equipment of this type.

Check for loose pivot screws (PDI-120) and any visible evidence of wear or damage. Cycle the arm to see if it feels tight or makes squeaking or grating noise. If it does it needs **LUBRICATION.**

PDi 400 Series Arms

Support arm. Able to be mounted directly in a variety of mounts (wall, counter, table top, floor) allowing easy positioning of television for viewing. Strong internal springs allow for years of trouble free service with easy and controlled movements. Braking system allows for stability and eliminates drift and drop. Allows for extension of television up to 62 inches. Can support a maximum weight of 23 pounds, but can be adjusted to almost any weight less than that.



MODEL 400 ARMS
ADJUSTMENT PROCEDURE

There are four (4) springs in the Model 400 arm that may be adjusted.

Adjustment screws all have 7/16 hex heads. These may be adjusted by using a 7/16 nut driver or 7/16 hex socket and ratchet drive. It is recommended you do not use a drill or power driver. Increased tension is achieved by turning the adjusting screws clockwise.

Adjustment screw Number 2, at the elbow, can be accessed through the hole in the top of the elbow after removal of access cap (PDI-146). It is best adjusted with the rear arm section horizontal and the front section vertical.

The three adjustment screws (1), (3), and (4) are best reached with the arm in the extended position.

400 Series - page 6

Adjustment screw (4) is reached from the opening at the rear of the arm, just above the base pin (PDI-208).

Adjustment screw (3) is best reached from underneath the elbow with the arm extended fully.

Adjustment screw (1) is reached by removing the nose cover (PDI-140).

CAUTION: These adjusting screws turn quite easily, if force is required you are either at the limit of adjustment on that screw or you have an interference. **DO NOT FORCE.**

ADJUSTMENT: The screw will tighten the springs when turned clockwise. Before adjusting, loosen the brake screws (PDI BHSCS 2520 100) one (1) turn, retighten to snug.

Normally 4 to 6 turns will effect adjustment, this moves the spring .050 (1/20th) of an inch per turn.

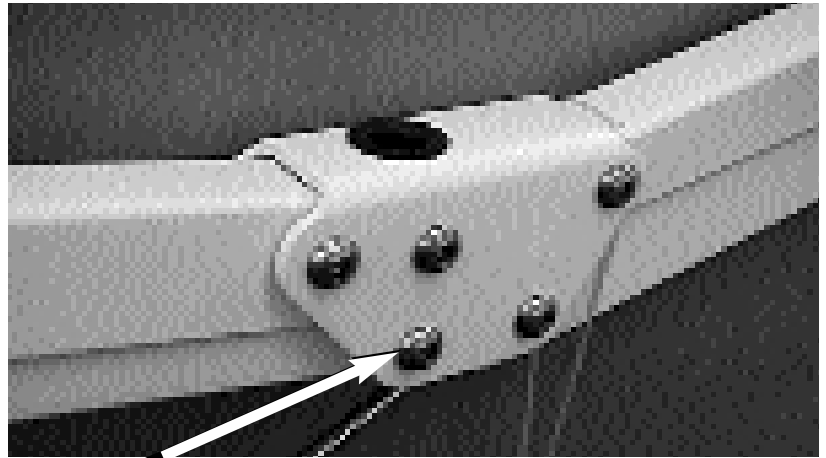
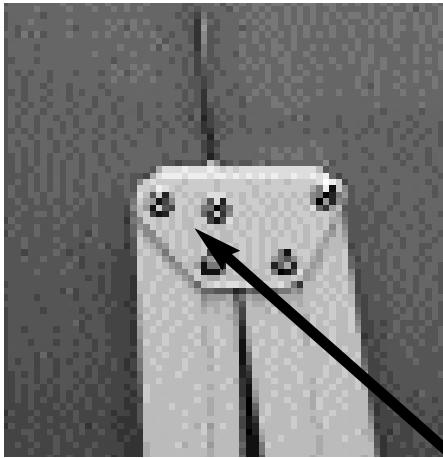
WHILE IT IS NOT CRITICAL TO DO SO, IT IS RECOMMENDED THAT BOTH SPRINGS IN AN ARM SECTION (FRONT OR BACK) BE ADJUSTED EQUAL AMOUNTS.

CAUTION: If the adjustment screw bottoms while adjusting or if after adjusting you hear a “clicking” noise, you may have drawn the spring against the pivot (PDI-11). Is, back off the adjustment one turn.

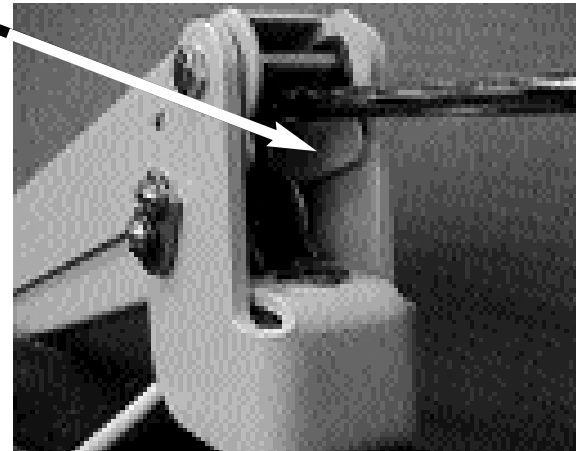
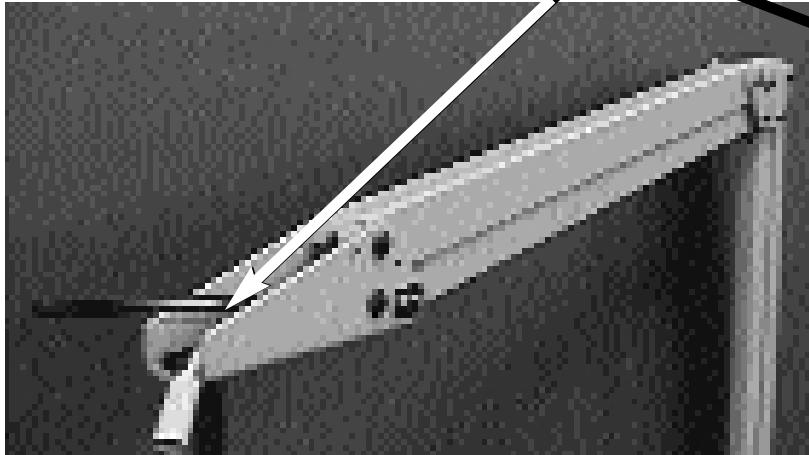
CAUTION: If the TV is removed, exercise extreme care handling the ARM. The springs are quite powerful and serious injury can result from improper handling. **NEVER** transport THE ARM without SAFETY PIN in place.



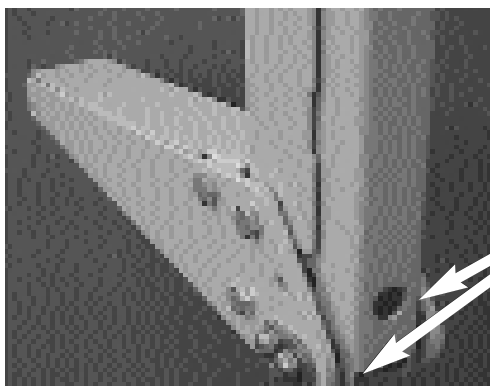
400-SPRING ADJUSTING POINTS



SPRING ADJUSTING POINTS



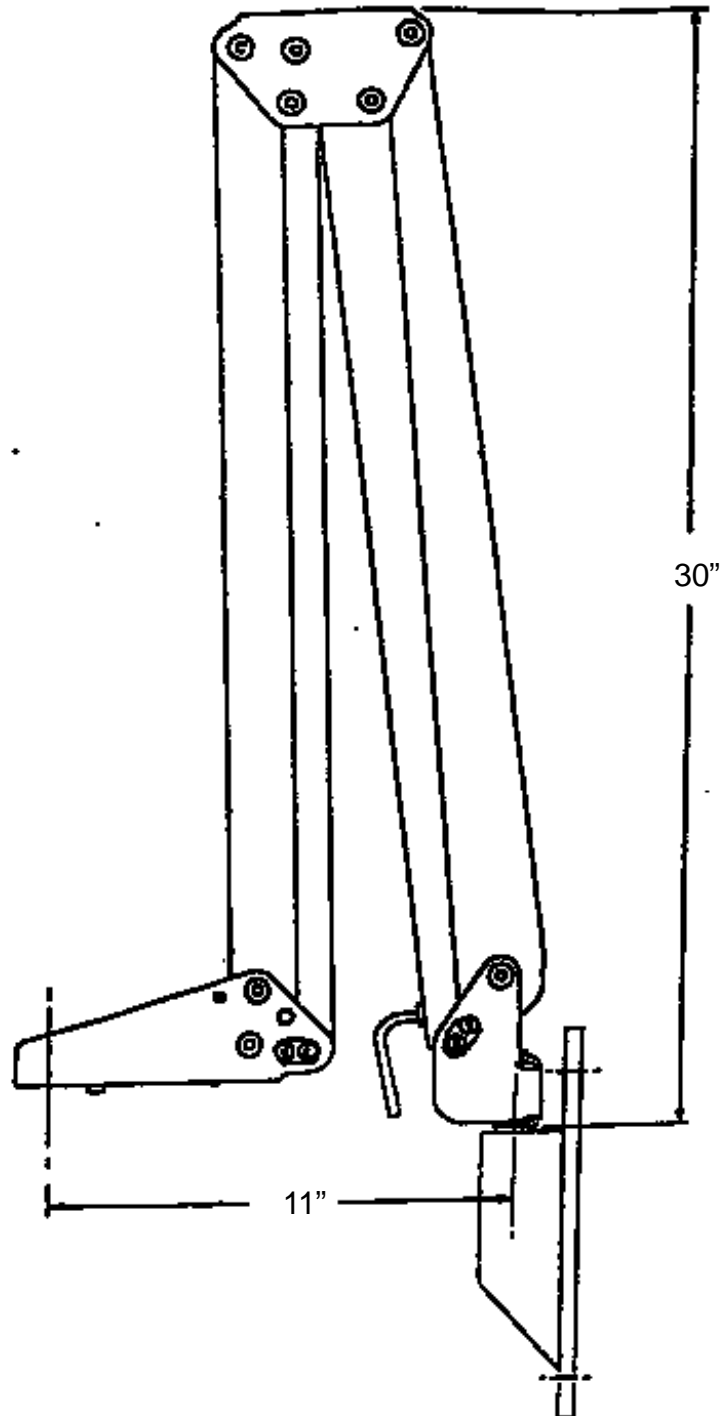
400-INSPECTION AND LUBRICATION POINTS



NOSE

INSPECTION AND LUBRICATION

PDi 400 series arm
supports up to 22.5 lbs.



**400 STYLE ARM
PARTS LIST**

PART/ITEM	DESCRIPTION	QUANTITY/ASS'Y
PDI-102/A	BRAKE END HUB	4.00
PDI-107	PIV ECCENT	4.00
PDI-111	FRONT ARM SPRING PIVOT	2.00
PDI-112	BRAKE LINK BASE	2.00
PDI-113	BRAKE-NOSE SHOE	2.00
PDI-114	BRAKE PAD	4.00
PDI-115	THIN HUB	4.00
PDI-116	THICK HUB W/FLAT	2.00
PDI-120	PIVOT-PIN	16.00
PDI-122	BUSH-CAB STRAIN RELIEF	1.00
PDI-136C	WIDE TAPERED ARM-BEIGE	1.00
PDI-137C	NARR TAPERED ARM-BEIGE	1.00
PDI-138C	WIDE STRAIGHT ARM-BEIGE	1.00
PDI-139C	NARR STRAIGHT ARM-BEIGE	1.00
PDI-140C	NOSE COVER-BEIGE	1.00
PDI-143C	NOSE-BEIGE	1.00
PDI-144C	ELBOW-WHITE	1.00
PDI-146	(P) ELBOW ACCESS CAP	1.00
PDI-148	NOS COV RET & PARK	1.00
PDI HCS 2520 600	(P)SPRING ATT BLT	4.00
PDI BHSCS 2520 38	PIVOT ECC BOLT	4.00
PDI BHSCS 2520 100	(P) BK SCW 1/4-20 X 7 1ZN PLT	2.00
PDI SLW 25	(P) BRAKE TENS WASH	5.00
PDI ITLW 25	(P) PIV ECC LOCK WASH	4.00
PDI AN 2520	(P) NOS COV NUTS	2.00
PDI-194	SWIVEL RETAINER	1.00
PDI BHSC 1032 38	(P) RG-59 CLMP BLT 10-32-3/8	1.00
PDI HHCS 2520 50	(P)BAS PIN BLT 1/4-20 X 1/2 H	1.00
PDI FW 25	(P) 1/4 FLAT WASH, BSE PN WS	1.00
PDI-202	HUB (W/NOTCH) (9/16"SQ.)	2.00
PDI-203	HUB (9/16" SQ.)	2.00
PDI-208	BASE PIN 5/8"	1.00
PDI-214C	STEEL BASE-BEIGE	1.00
PDI-247	NOSE CLAMP - 59 CBL	1.00
PDI-248	(P) MALE CABL BOOT	1.00
PDI-294	F TYP CATV#33-420RG59	1.00
PDI SHCS 2520 75	SWIV STP 1/4-20*3/4 SHC	1.00
PDI-298	FRONT SPRING ASSY	1.00
PDI-299	BACK SPRING ASSY	1.00
PDI-450	SMALL ATT BAR	1.00
PDI-513	LARGE ATT BAR	1.00
PDI-563	CBL ASSY - ALL 400 SERIES ARMS	1.00