

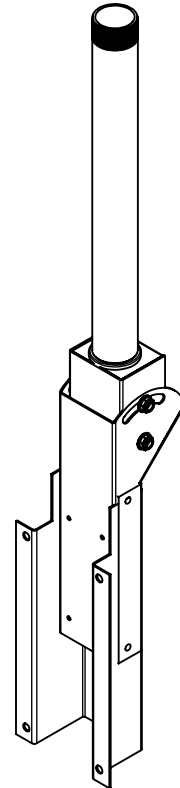
THFSCT20 - Ceiling Mount with Hidden Connections for Flat Screens from 23" to 60" Weighing up to 200Lbs.

The THFSCT20 ceiling mount is designed to work with our 1-person hoist system. The ceiling mount has $\pm 20^\circ$ reversible tilt. The cords from the monitor can be lead from behind the monitor through the pipe up into the ceiling for a neatly concealed wiring connection. Ceiling hardware and accessories for structural variation are ordered separately. The THFSCT20 works with any THFSU type flat screen adapter, ordered separately to fit the monitor size. Portrait and Landscape view adapters are available.

Features:

Durable epoxy black wrinkle finish

Fits from 23" to 60"+ flat screen monitors up to 200 Lbs.



Optional Accessories:

THCMASF15 - Square 12" x 12" Ceiling Flange.

CMACC150 - Cathedral Ceiling Flange for use with hidden cord connections.

CMAF150 - Custom cut pipe, threaded and powder coated for use when the 18" pipe provided will not work.

CMAEF150 - Chrome Escutcheon Flange for use with pipes dropping through false ceilings.

Maximum Load Limit:

200 Lbs. (90.9 Kg.)

Product Weight:

10.5 Lbs. (4.8 Kg.)

Shipping Weight:

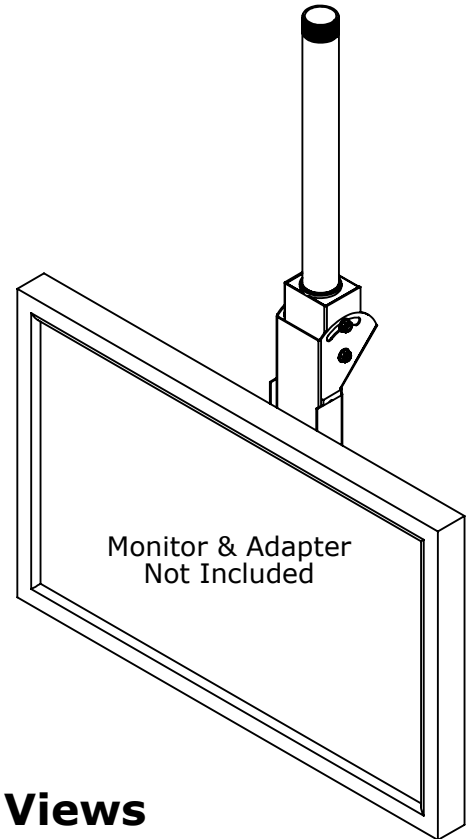
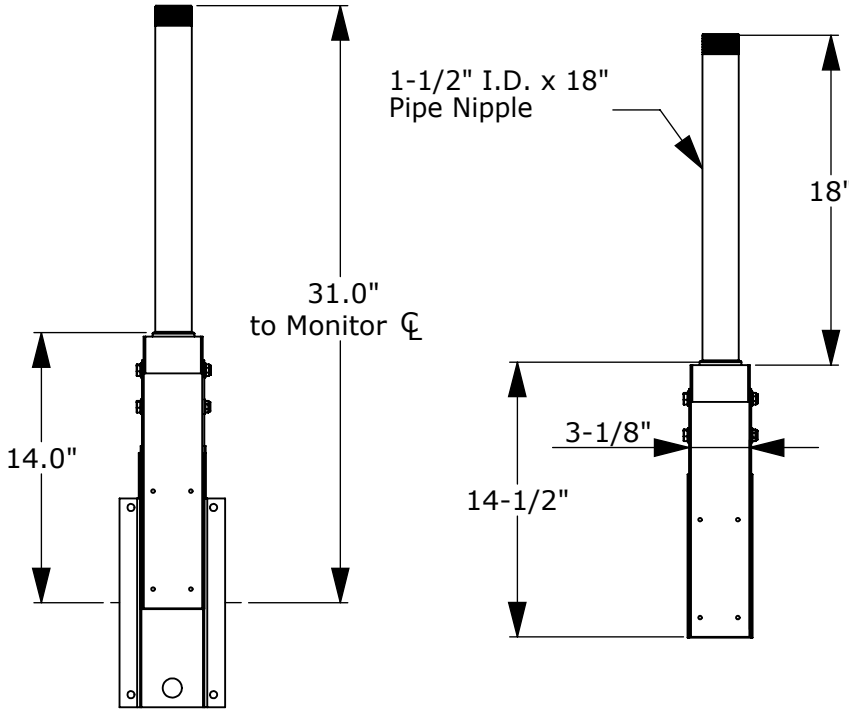
12.3 Lbs. (5.6 Kg.)

Carton Dimensions:

19-1/2"L x 6-1/4"W x 6-1/2"H

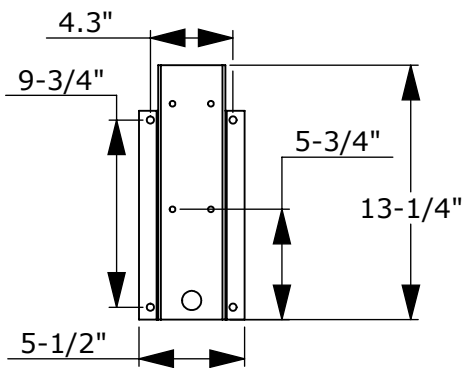
Architectural Specification: The Ceiling Mount shall be Lucasey model THFSCT20 and shall be located where indicated on the plans. It shall be used with a universal or model specific monitor attaching adapter plate compatible with monitor model specified. Ceiling attaching hardware and accessories shall be specified separately. Assembly and installation shall be done according to instructions provided by the manufacturer.

Front Views



Side Views

Standard Hat



* Note: Longer and knothed hats are available for different applications

